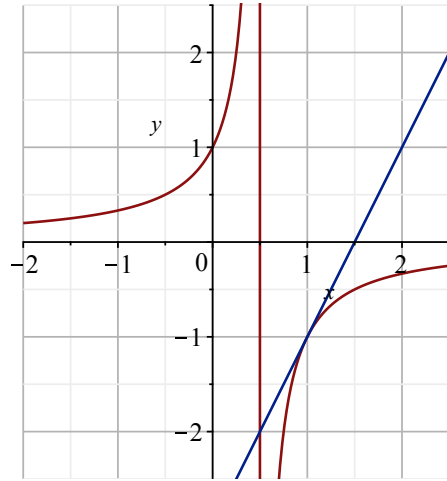


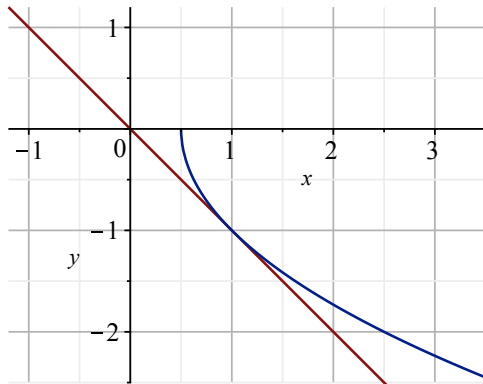
問題2

$$\text{plot}\left(\left\{\frac{1}{1-2\cdot x}, 2\cdot x-3\right\}, x=-2..2.5, y=-2.5..2.5\right)$$



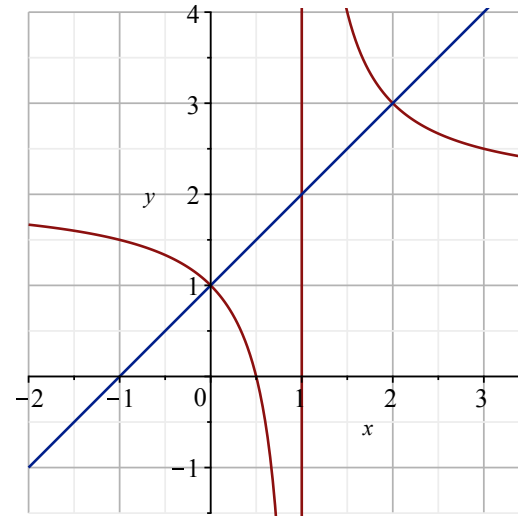
問題3

$$\text{plot}\left(\{-\sqrt{2\cdot x-1}, -x\}, x=-1.2..3.5, y=-2.5..1.2\right)$$

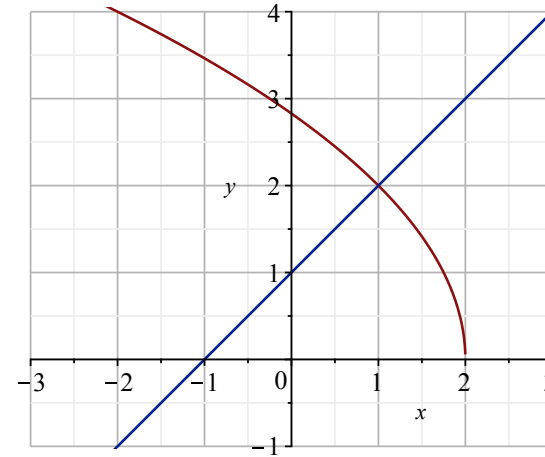


問題4

$$\text{plot}\left(\left\{\frac{2\cdot x-1}{x-1}, x+1\right\}, x=-2..3.5, y=-1.5..4\right)$$

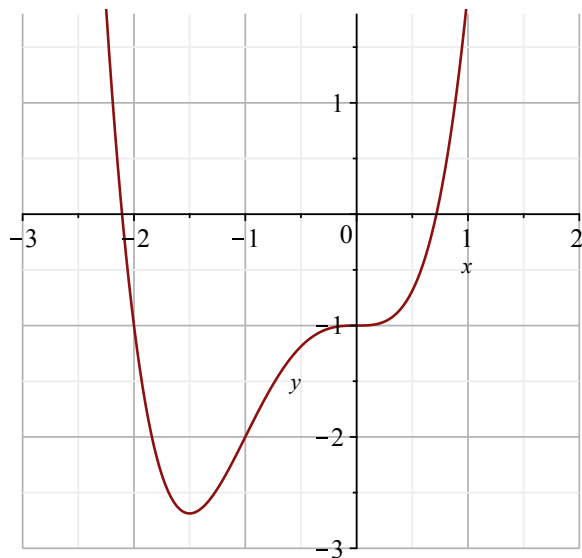


$$\text{plot}\left(\{\sqrt{-4\cdot x+8}, x+1\}, x=-3..3, y=-1..4\right)$$

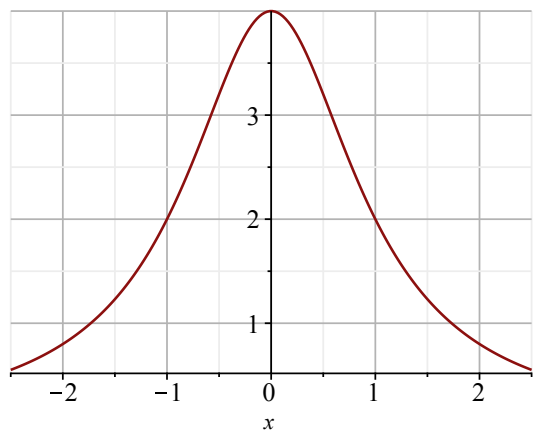


問題8

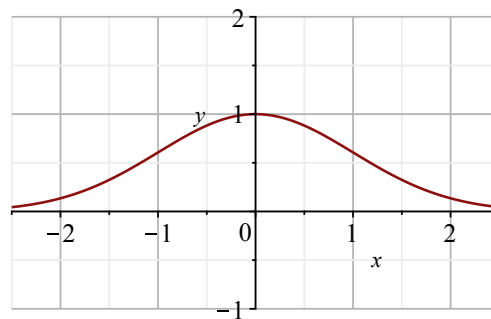
$plot(x^4 + 2 \cdot x^3 - 1, x=-3..2, y=-3..1.8)$



$plot\left(\frac{4}{x^2 + 1}, x=-2.5..2.5\right)$



$plot\left(e^{-\frac{x^2}{2}}, x=-2.5..2.5, y=-1..2\right)$



$plot\left(\frac{1}{x} + \log(x), x=0..4, y=0..3\right)$

